

FOR LEASE > RETAIL & OFFICE SPACE

# CENTRE 118

15515 118 AVENUE EDMONTON AB



## PROPERTY DETAILS

The Retail Centre is located on the corner of 156<sup>th</sup> Street and 118 Avenue. Situated in one of the most populated industrial areas in Edmonton. The Retail Centre has direct exposure to 118 Avenue and 156 Street. Whether your business is retail, hospitality, or office space this property will provide you with an excellent location. Some market highlights include:

- Lease rates starting at \$18.00 Per Sq. ft. Net
- Operating Costs \$10.50 Per Sq.ft (Est. 2023)
- On-Site Parking
- Term 5 Years minimum
- Tenant Improvement Packages Negotiable

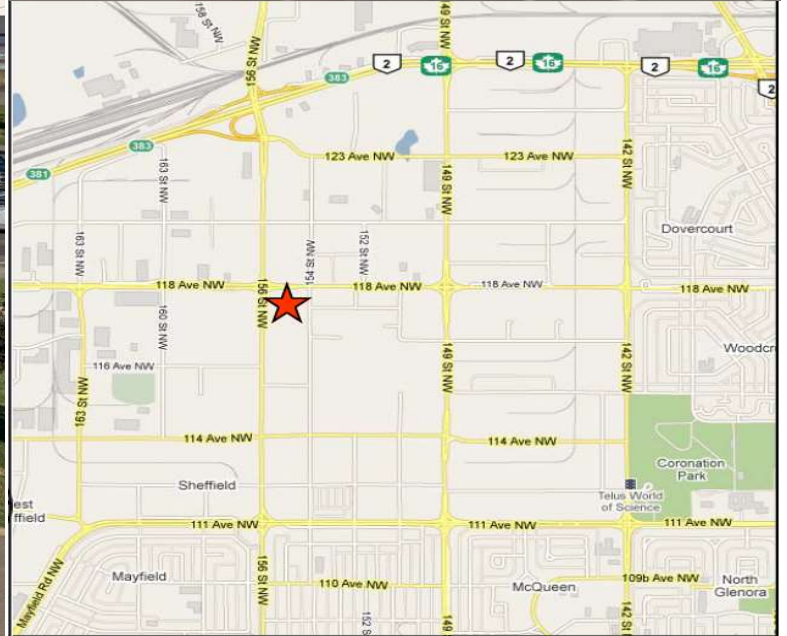
FOR LEASE > RETAIL & OFFICE SPACE

# CENTRE 118

15515 118 AVENUE EDMONTON AB

## Available Premises

- 15515 – 118 Ave – 1,756 SQ. FT. -Available Immediately
- 15525 – 118 Ave – 1,202 SQ. FT. -Available Immediately



Karen Lubenow  
Real Estate Manager  
Toll Free: 1-888-343-3388  
Phone: (403) 228-3838  
klubenow@wcilttd.ca

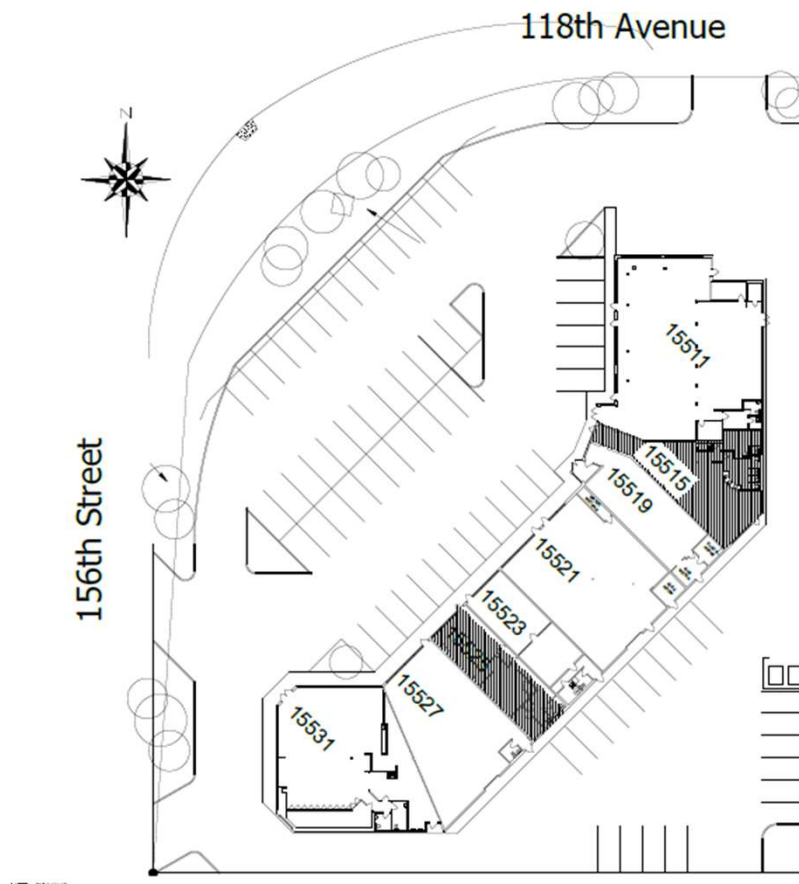
FOR LEASE > RETAIL & OFFICE SPACE

# CENTRE 118

15515 118 AVENUE EDMONTON AB

## Available Premises

- 15515 – 118 Ave – 1,756 SQ. FT. -Available Immediately
- 15525 – 118 Ave – 1,202 SQ. FT. -Available Immediately



Site Plan